

# DREAM COLOURS

Superstar B.V.

# Superstar



# DREAM COLOURS



Artist Svetlana Keller



# Superstar is a family business established since 1947

We are a Dutch company founded in 1947 who specialise in producing face and body paint for both professional and amateur painters. Superstar is one of the founding fathers of professional paint and have played a very significant part in developing Aqua Face and Body paint into the industry we know today. Ranging from paint brushes to the beautiful vibrant aqua based colours we have today. Superstar satisfies all of the strict Aqua Face and Body paint requirements of the European Cosmetics Regulation (1223/2009/EG).

Superstar Aqua Face and Body paint is developed to be safe and gentle to the skin, with powerful and lively colours made for everyone. The paint is easy to remove with just water and a small amount of mild soap. Our collection exists of over a hundred shades, available in matt or shimmer and has now been expanded with 13 beautiful dream colors, so-called rainbow cakes.

Also the Superstar Dream Colours are still produced in a very unique and artisanal way in our factory located in Oosterhout (NB) The Netherlands.

We at Superstar are proud to make the world a little more colourful with our beautiful products. Check our website [www.dreamcolours.nl](http://www.dreamcolours.nl) for more info and Tutorials.



# PRINCESS

Artist: Teresa Antinoro



Photo by Marco Pieri



This lovely princess puts a smile on your face. Use the Superstar Butterfly Sponge to place the base around the eyes. Use the teardrop technique for a crown. Add some curls to close the design. Use the Ziva Dotter Brush to add some dots in white.



For a more sparkling effect you can add some Superstar Glitters.

**Brushes:** Butterfly Sponge, Round Brush Maayke 3 & 5, Dotter Brush Ziva

**Glitters:** Sparkling Glitters

**Colours:**



127



161



Sunshine 908

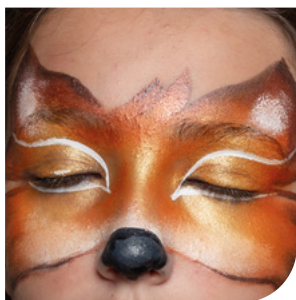


# FOX

Artist: Tiziana La Monica

Photo by Davide da Damos





Use the big Ksenia Angle Brush and load with the two darkest colours of the Safari Dream Colour to outline the Fox, load a half round sponge with the three lightest colours and fill the inside of the Fox. Add some white with a sponge near the nose and to create the ears. Use black and white for the outlining and details. Add some glitters on the nose for that extra special touch.

**Glitters:** Laser Chunky Glitter Mix 6-pack

**Brushes:** Angle Brush Ksenia 5/6, Eco Sponge, Round Brush Maayke 3.

**Colours:**



163



161



Safari 907



Check the new website:  
[www.dreamcolours.nl](http://www.dreamcolours.nl) for  
this step-by-step and many  
more!

# BUTTERFLY

Artist: Annie Reynolds



139-85.913:  
Carnival

Photo by Tenille Salmon Soul Images



Check all the colours that you already have or want to have!



**139-85.901:**  
Rainbow



**139-85.902:**  
Summer



**139-85.903:**  
Ice cream



**139-85.904:**  
Unicorn



**139-85.905:**  
Emerald



**139-85.906:**  
Ice



**139-85.907:**  
Safari



**139-85.908:**  
Sunshine



**139-85.909:**  
Candy



**139-85.910:**  
Flower



**139-85.911:**  
Sweet



**139-85.912:**  
Mermaid

**An overview of all Dream Colours!**



# MONSTER EYE

Artist: Svetlana Keller

Photo by Svetlana Keller





Use a Butterfly sponge to apply dream colours around the eye in the shape of butterfly wings, add a darker color on the eyelid. Paint claws with 135 red using a filbert brush Burny Nr 8. Outline everything with 163 Line Black and a round brush Maayke Nr 1. Paint highlights with 161 Line White and a round brush Maayke Nr 2. Outline the design with 161 Line White and a liner brush Maayke Nr 1, use a stencil and a dauber to apply structure in white.



**Brushes:** Butterfly Sponge, Round Brush Maayke 1, 2, 3 & Filbert Brush Burny 8.  
**Stencil:** Bam Stencil 1027  
**Colours:**



135



163



161



Emerald 905

# FIZZY FAIRY

Artist: Murml Gold



**Brushes:** Butterfly Sponge, Round Brush  
Maayke 3, 5, Filbert Brush Burny 8.  
**Colours:**



161



201



Ice cream 903



Flower 910



# EYE DESIGN

Artist: Cindy Loridan



**Brushes:** Butterfly Sponge, Round Brush

**Maayke 3**

**Stencil:** BAM 1036

**Colours:**



161



Ice 906

# TIPS AND TRICKS

Artist: Syl Verberk



Photo by Toine Udo



# Use with a sponge

- Moisten your sponge with clean water and if necessary wet the make-up a little by spraying it with a spray bottle filled with clean water.
- Then gently wipe the make-up with the sponge, because it is quite soft it is best to move it back and forth with your sponge, so back and forth so that you do not push the make-up too much in one direction and wipe it out of the jar.
- Try to apply even pressure on the sponge to pick up all the colors.
- Then apply the make-up while dabbing on the skin and you will have a great effect in one go with colors that blend beautifully into each other.
- If you want to reload the sponge with the Dream Color, make sure that you place it the same on the face paint to prevent the colors from unintentionally mixing up.

For more tips and tricks check  
[www.dreamcolours.nl](http://www.dreamcolours.nl)





Florijnstraat 12  
4903 RM Oosterhout  
T: +31 (0) 162 457 400  
info@superstar.nl  
www.superstar.nl  
www.dreamcolours.nl